

Step Inserts - Matching Handrail included

Category (1) - Engineered Laminated Timber Plank included in price

Category (2) - Solid Timber Plank add \$160 +GST per step

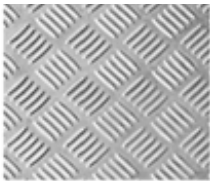
Indoor Wood Step Inserts



Outdoor Wood Step Inserts



Special Step Inserts



Checker Plate
Aluminum (2)

Balustrade Colouring



GRIS 900 Sable
(Grey Colour)
Approx RAL 7022

Vertical Safety Barrier



Self driven vertical barrier at top landing area. Elevates to a height of 900/1100 mm when the Lift is moved away from the top landing area. Only available for EasyStep with lifting heights above 500 mm. Add \$3,860 +GST

Special Handrail

Satin Stainless Steel Add \$160 +GST



Wireless Call Buttons

Available for 1,2 and 3 buttons respectively for Upper and Lower landings (Included)

Wireless Call Button Post

Add \$565+GST